

## Features

- Compact and simple design
- Rotary disc, direct operated valves
- Side porting
- Detent action smooth lever actuation
- General pneumatic applications

## Lubrication

Filtered and lubricated air recommended for maximum valve life and minimum maintenance.

## Material specifications

Cover	Zinc
Body	Aluminum
Seals	Polyurethane



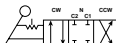
## Operating information

Operating pressure: 0 to 150 PSI (0 to 10 bar)

Temperature range: 32°F to 166°F (0°C to 60°C)

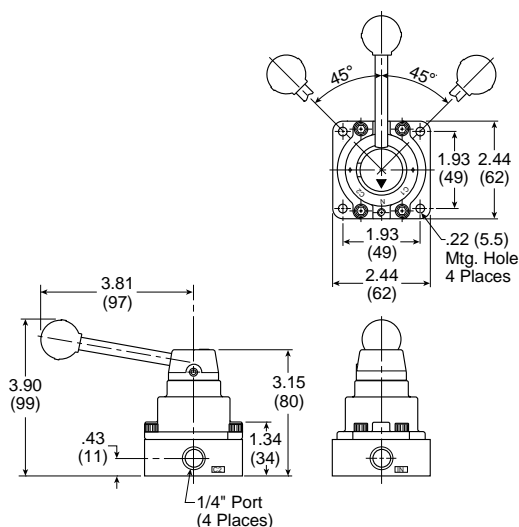
Lubrication: Filtered and lubricated air recommended for maximum valve life and minimum maintenance.

## HV Valve Series

Symbol	Port size	Description	Cv (ANSI)	Cv (JIS)	Part number
	1/4" NPT	4-way, 3-position	0.5	0.4	<b>HVN4200-8</b>
	3/8" NPT	4-way, 3-position	1.4	2.72	<b>HVN4400-10</b>
	1/2" NPT	4-way, 3-position	1.5	3.26	<b>HVN4400-15</b>

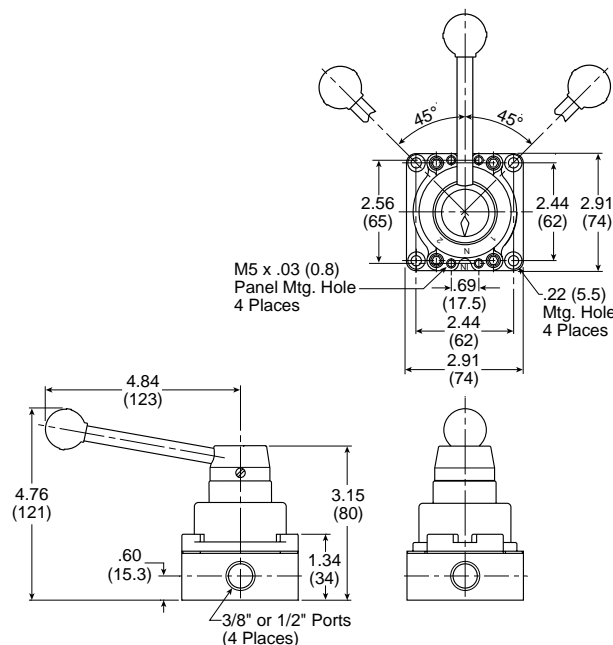
## Service kits

Description	Valve size	Part number
Disk & seal service kits	HV4200	<b>HVRK420001</b>
	HV4400	<b>HVRK440001</b>



**HVN4200-8**

Most popular. For technical information see CD



**HVN4400-10, 15**